

Watch 4 Size v1.0 User Guide

By LeeLu Soft 2013

Table of Contents

[Introduction](#)

[Installation](#)

[Start using W4S](#)

[Selecting a folder to monitor](#)

[Setting the threshold](#)

[Setting actions](#)

[Starting the monitor](#)

[Live Log](#)

[Using monitor files](#)

[Command line options](#)

[OS Support](#)

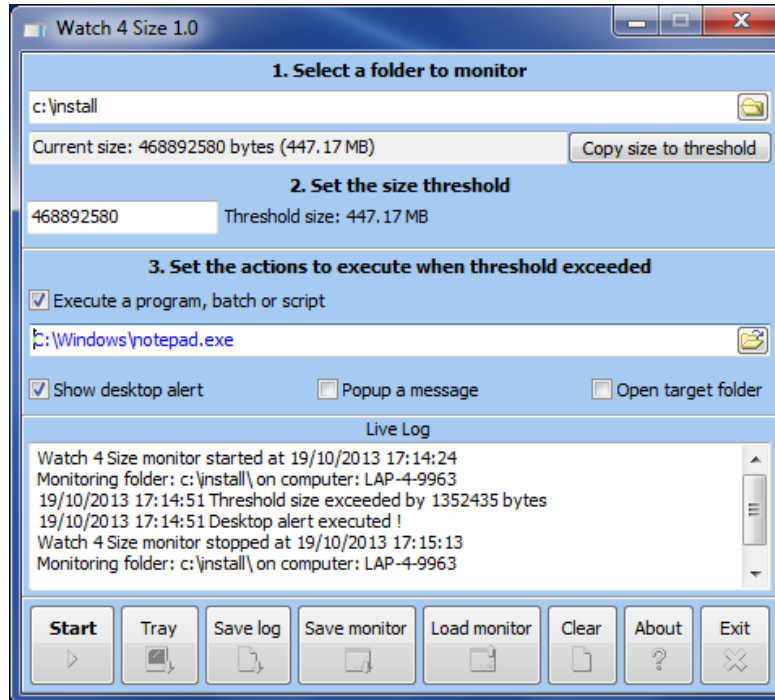
[Freeware License](#)

[Contact](#)

Introduction

Watch 4 Size is a simple to use and powerful monitoring and automation tool to monitor changes in folder size.

It is a small, portable (after the first installation) and simple to use utility.



Watch 4 Size let you know when the target folders size has reached your pre-defined threshold and can execute actions automatically.

It can be auto-loaded with your pre-defined settings and can run minimized from the system tray (notification area).

Note, W4S calculate the target folder size including all sub folders.

Installation

Follow the installer wizard to extract W4S into your destination folder, the installer will let you create start menu, quick launch and desktop shortcuts and will extract W4S.exe and the user guide to your destination folder.

After this one time installation, you can move W4S.exe to any location on your computer or to a different computer and execute it.

Uninstall:

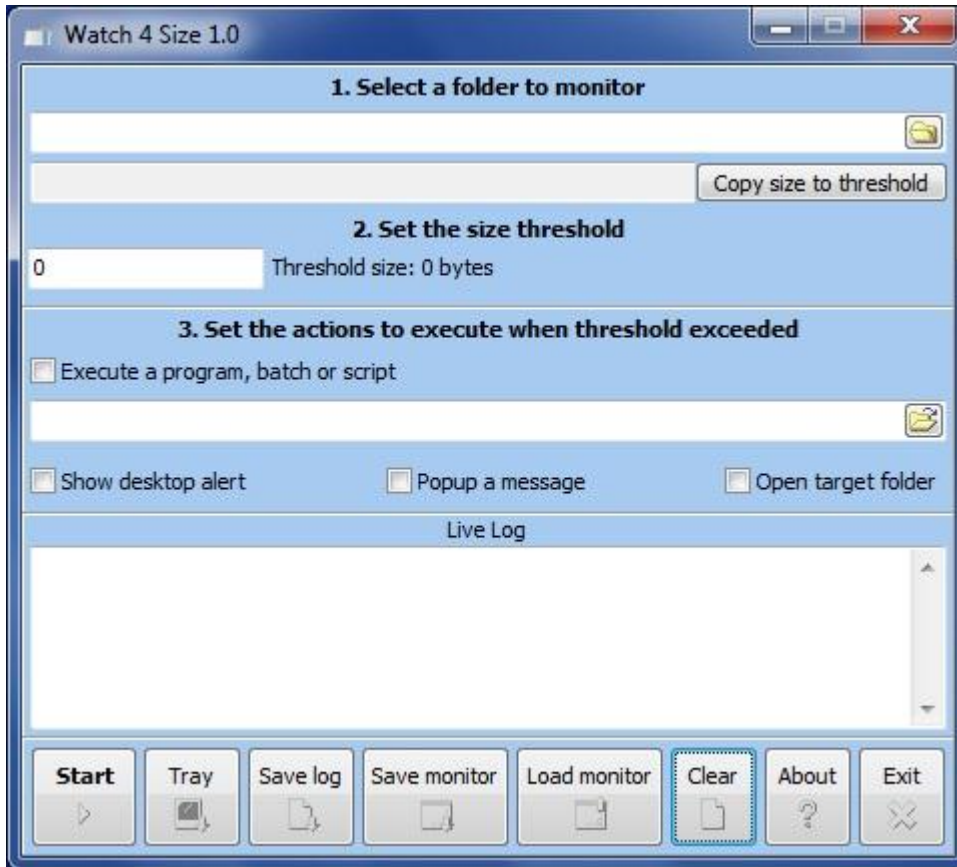
To completely remove **Watch 4 Size** from your computer, just delete W4S.exe and this user guide, if you have created some settings files, delete this files too.

Start using W4S

Execute W4S.exe to start using **Watch 4 Size**.



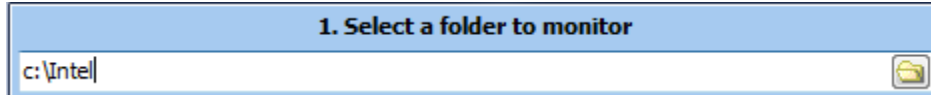
Executing W4S.exe will open the main (and only) screen:



This is the only screen and from here you can set everything in a simple way.

Selecting a folder to monitor

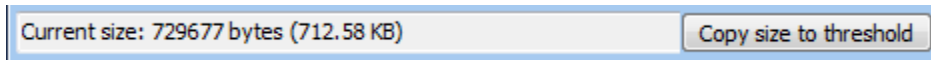
The first stage is selecting the folder to monitor (the target folder), click on the folder icon and browse and select the target folder, or just enter the path to this folder directly (auto complete helper is enabled):



1. Select a folder to monitor

c:\Intel

Now press Enter or move the cursor to a different field, this will populate the next field with the current size of the target folder (including sub folders):

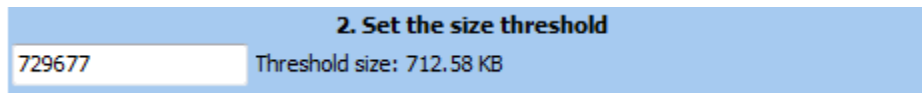


Current size: 729677 bytes (712.58 KB) Copy size to threshold

Note: with some folders this process can take a while, depending on the amount of files, subfolders complexity and the size of the folder.

Setting the threshold

Now when you know the current folder size, it is time to set the threshold, to start with, you can click on "**Copy size to threshold**" or just enter it manually in **bytes** (W4S will auto translate it to a more readable format):



2. Set the size threshold

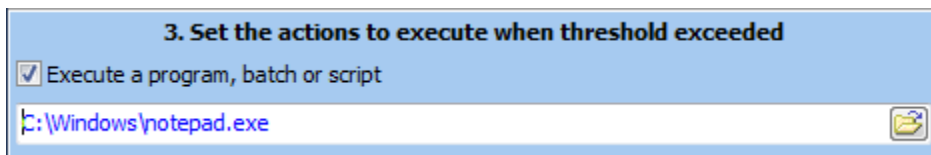
729677 Threshold size: 712.58 KB

Setting actions to execute when threshold exceeded

W4S let you set 4 kinds of actions:

Execute a program, batch or script, this option let you decide what to execute when threshold is reached.

First you need to enable execution by checking the "Execute a program batch or script" and then browse and select or directly enter the path to the file you want to execute.

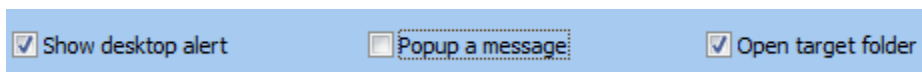


3. Set the actions to execute when threshold exceeded

Execute a program, batch or script

c:\Windows\notepad.exe

Other actions let you display a desktop alert (same as Outlook new mail alert), popup a message or open the target folder in Windows Explorer.



Show desktop alert Popup a message Open target folder

Starting the monitor:

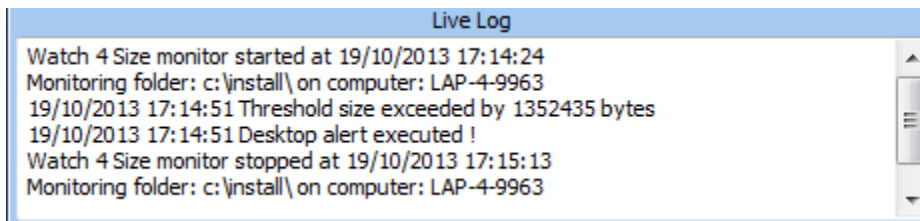
Now, when everything is set correctly, Click on the "Start" button and the monitor will start working.

You can also click on "Tray" button to minimize W4S to the system tray (notification area). To restore from system tray, just click on the W4S icon in the system tray.

To stop the monitor, use the same button as in start, while monitoring it will show "Stop".

Live log

W4S maintains a live log that collects every event and action:



Use the "Save log" button to save the log as a text file.

Using monitor files (settings files)

With monitor files you can save your W4S settings so you can use the same settings later or execute W4S directly with the settings you need, you can create as many monitoring files as you need.

Creating a monitor file from W4S interface:

Open W4S and set you target folder, threshold and actions.

Now click on "Save monitor", a save dialog will open, give it a name or leave the default name.

Your settings are saved now.

Loading a monitor file from W4S interface:

Open W4S and click on "Load monitor", a file open dialog will open, select the monitor you saved before and you setting will be loaded to W4S form.

Loading W4S from the command line with specific parameters

W4S can be loaded directly from the command line or from a batch file using parameters:

To load W4S with specific monitor settings:

```
W4S.exe <your_monitor_file>
```

Example:

```
W4S.exe c:\settings\settings.ini
```

This will open W4S with the settings from c:\settings\settings.ini

To load W4S with specific monitor settings and auto start monitoring:

```
W4S.exe c:\settings\settings.ini -a
```

To load W4S with specific monitor settings, auto-start monitoring and auto-minimize to the system tray:

```
W4S.exe c:\settings\settings.ini -a -m
```

Editing the monitor files manually:

Monitor files are actually Windows INI files and can be edited manually.

The INI files structure is very simple:

All the settings are under a single section named [set]

The key are:

target = path to the target folder

threshold = number in bytes

execute = 1 to enable execute a program, 0 to disable execute a program

program = path to the file to execute

desktop = 1 to display desktop alert, 0 to disable desktop alert

popup = 1 to show popup messages, 0 to disable popup messages

explore = 1 to open Windows explorer, 0 don't open Windows Explorer

Example (file name settings.ini):

```
[set]
```

```
target=c:\Intel
```

```
threshold=468892456
```

```
execute=1
```

```
program=c:\Windows\notepad.exe
```

```
desktop=1
```

```
popup=0
```

```
explore=0
```

OS Support

Watch 4 Size 1.0 was developed on Windows 7 Professional, it was also tested on Windows XP Professional but should run on other Desktop and Server windows based OS.

LeeLu Soft Freeware License (for free version only)

Copyright 2008 © by LeeLu Soft <zvika.israeli@gmail.com>. All rights reserved

THIS SOFTWARE IS PROVIDED BY THE AUTHOR AND CONTRIBUTORS "AS IS" AND ANY EXPRESS OR IMPLIED WARRANTIES, INCLUDING, BUT NOT LIMITED TO, THE IMPLIED WARRANTIES OF MERCHANTABILITY AND FITNESS FOR A PARTICULAR PURPOSE ARE DISCLAIMED. IN NO EVENT SHALL THE AUTHOR OR CONTRIBUTORS BE LIABLE FOR ANY DIRECT, INDIRECT, INCIDENTAL, SPECIAL, EXEMPLARY, OR CONSEQUENTIAL DAMAGES (INCLUDING, BUT NOT LIMITED TO, PROCUREMENT OF SUBSTITUTE GOODS OR SERVICES; LOSS OF USE, DATA, OR PROFITS; OR BUSINESS INTERRUPTION) HOWEVER CAUSED AND ON ANY THEORY OF LIABILITY, WHETHER IN CONTRACT, STRICT LIABILITY, OR TORT (INCLUDING NEGLIGENCE OR OTHERWISE) ARISING IN ANY WAY OUT OF THE USE OF THIS SOFTWARE, EVEN IF ADVISED OF THE POSSIBILITY OF SUCH DAMAGE.

Contact:

[LeeLu Soft](#)

<http://leelusoft.blogspot.com>